

STRUCTURAL NOTES:

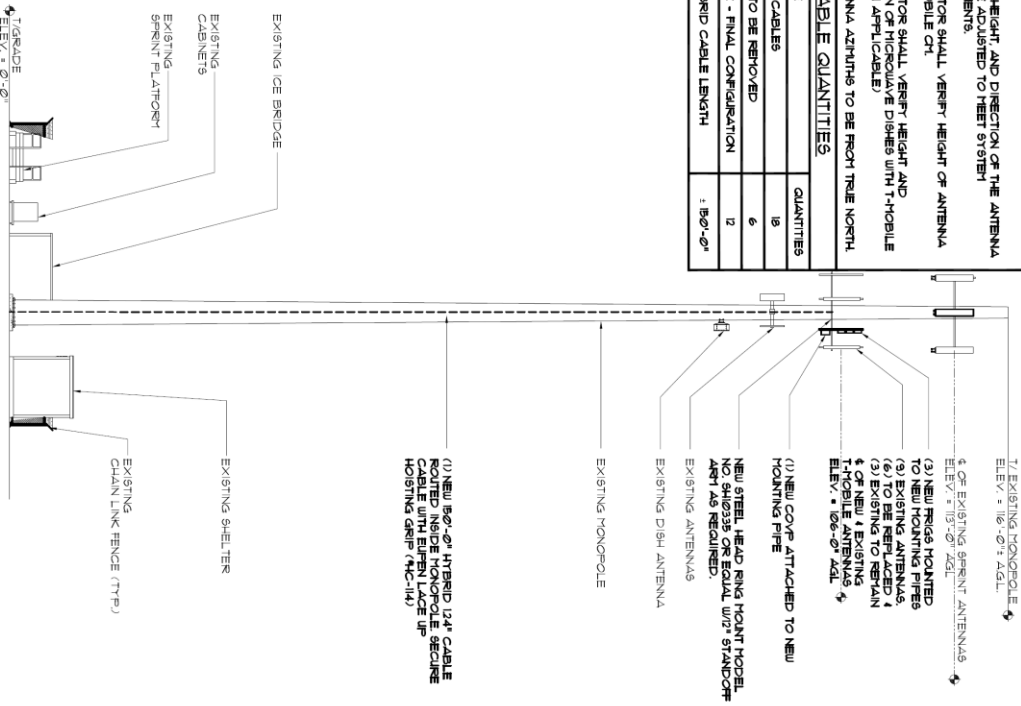
1. STRUCTURAL CALCULATION PREPARED BY OTHERS. CONTRACTOR TO COORDINATE WITH PROJECT MANAGER TO OBTAIN A COPY.
2. CONTRACTOR TO REFER TO TOWER STRUCTURAL CALCULATIONS FOR ADDITIONAL LOADS, NO REDUCTION OR MODIFICATION OF TOWER SHALL BE MADE WITHOUT APPROVAL OF STRUCTURAL ENGINEER.

NOTES:

1. THE SITE HEIGHT AND DIRECTION OF THE ANTENNA SHALL BE ADJUSTED TO MEET SYSTEM REQUIREMENTS.
2. CONTRACTOR SHALL VERIFY HEIGHT OF ANTENNA WITH T-HOBBLE CRT.
3. CONTRACTOR SHALL VERIFY HEIGHT AND DIRECTION OF MICROWAVE DISHES WITH T-HOBBLE CRT (WHEN APPLICABLE).
4. ALL ANTENNA AZIMUTHS TO BE FROM TRUE NORTH.

CABLE QUANTITIES

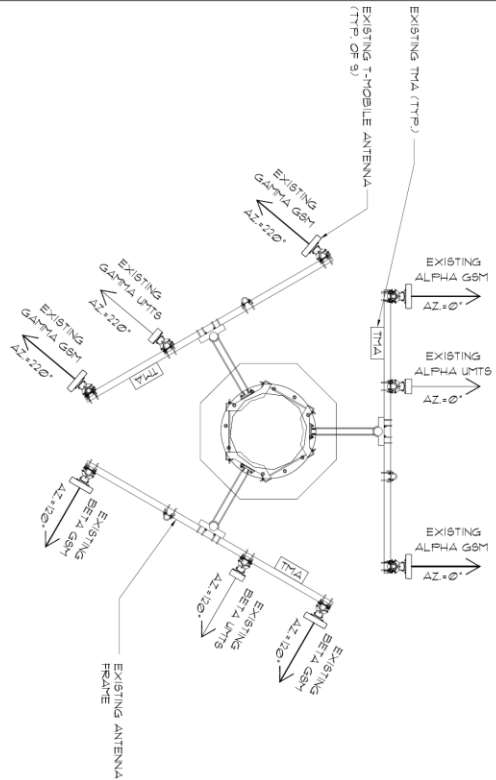
TYPE OF CABLE	QUANTITIES
EXISTING COAX CABLES	18
COAX CABLES TO BE REMOVED	6
TOTAL OF COAX - FINAL CONFIGURATION	12
PROPOSED HYBRID CABLE LENGTH	180'-0"



SITE ELEVATION

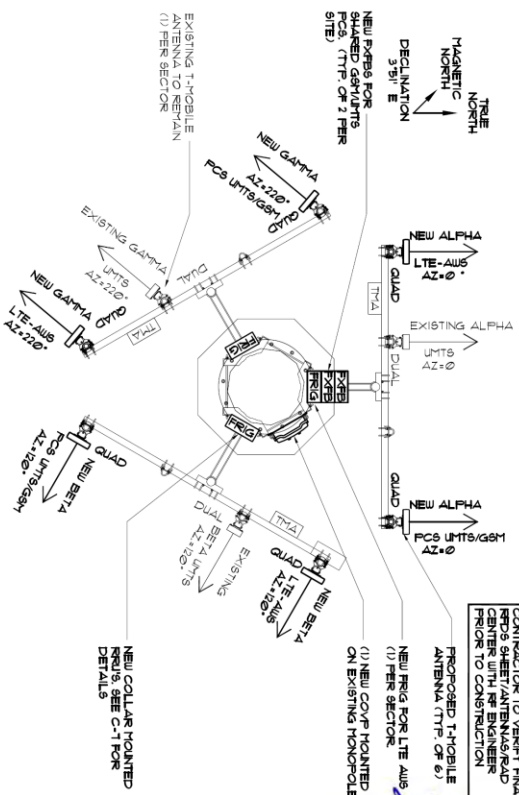
SCALE: NTS 1

EXISTING ANTENNA LAYOUT



EXISTING ANTENNA LAYOUT

SCALE: 3/16" = 1'-0" 2



FINAL ANTENNA LAYOUT

SCALE: 3/16" = 1'-0" 3

Mobile

1 GREENWAT PLAZA
SUITE #100
HOUSTON, TEXAS 77046
TEL: (281) 771-1682

SBA

SBA COMMUNICATIONS CORP
901 E STATE HIGHWAY 121
LEWISVILLE, SUITE D 75097-4402
TEL: (214) 283-3303

FULLERTON
ENGINEERING & DESIGN

9600 W. BRYN MAWR AVE SUITE 200
ROSEMONT, ILLINOIS 60018
TEL: 847.279.0200
FAX: 847.279.0206
CO.# 13354
www.fullertonengineering.com

CHECKED BY:	DATE	DESCRIPTION
JF	1/10/13	90% REVIEW
TH	1/15/13	100% FINAL
TL	2/19/13	CONSTRUCTION

PROFESSIONAL ENGINEER
STATE OF TEXAS
No. 88274
SIGNED DATE: 2/27/13

SITE NAME: SPUR 48

SITE NO.: DA01144C

SITE ADDRESS: 3832 SPUR 48, SUITE A DALLAS, TX 75236

SHEET NAME: ELEVATION & ANTENNA PLAN

SHEET NUMBER: C-4